



VISITING
U CITY



This document tells you about visiting U City.

The address is 43 Franklin Street, Adelaide.

U CITY



This is where you go into the U City building.

U CITY



There are bus stops nearby.

Click on the link below to plan a bus trip to U City:

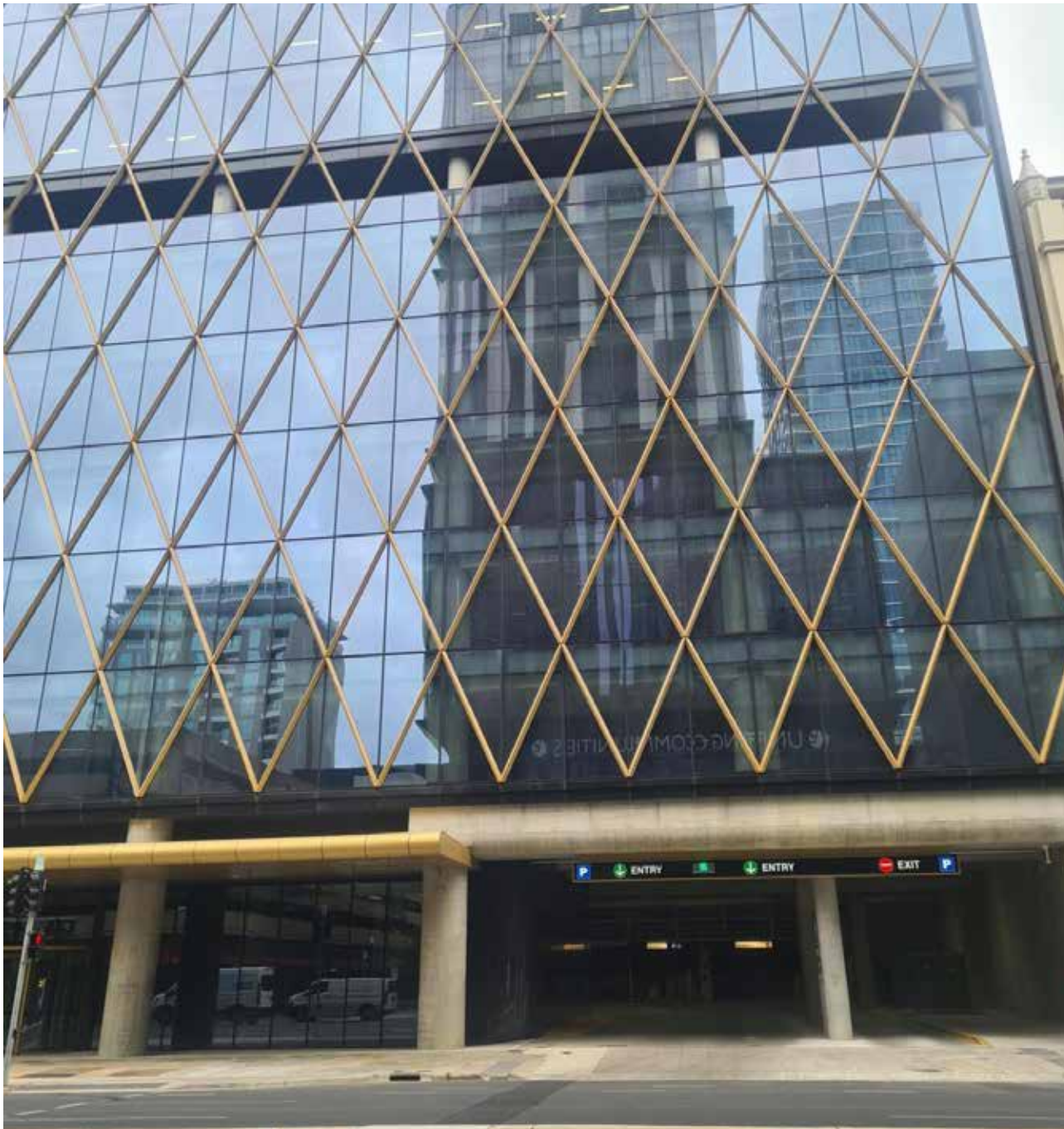
<https://www.google.com/maps/dir/?api=1&travelmode=transit>

U CITY



You can walk to U City from the Central train station.

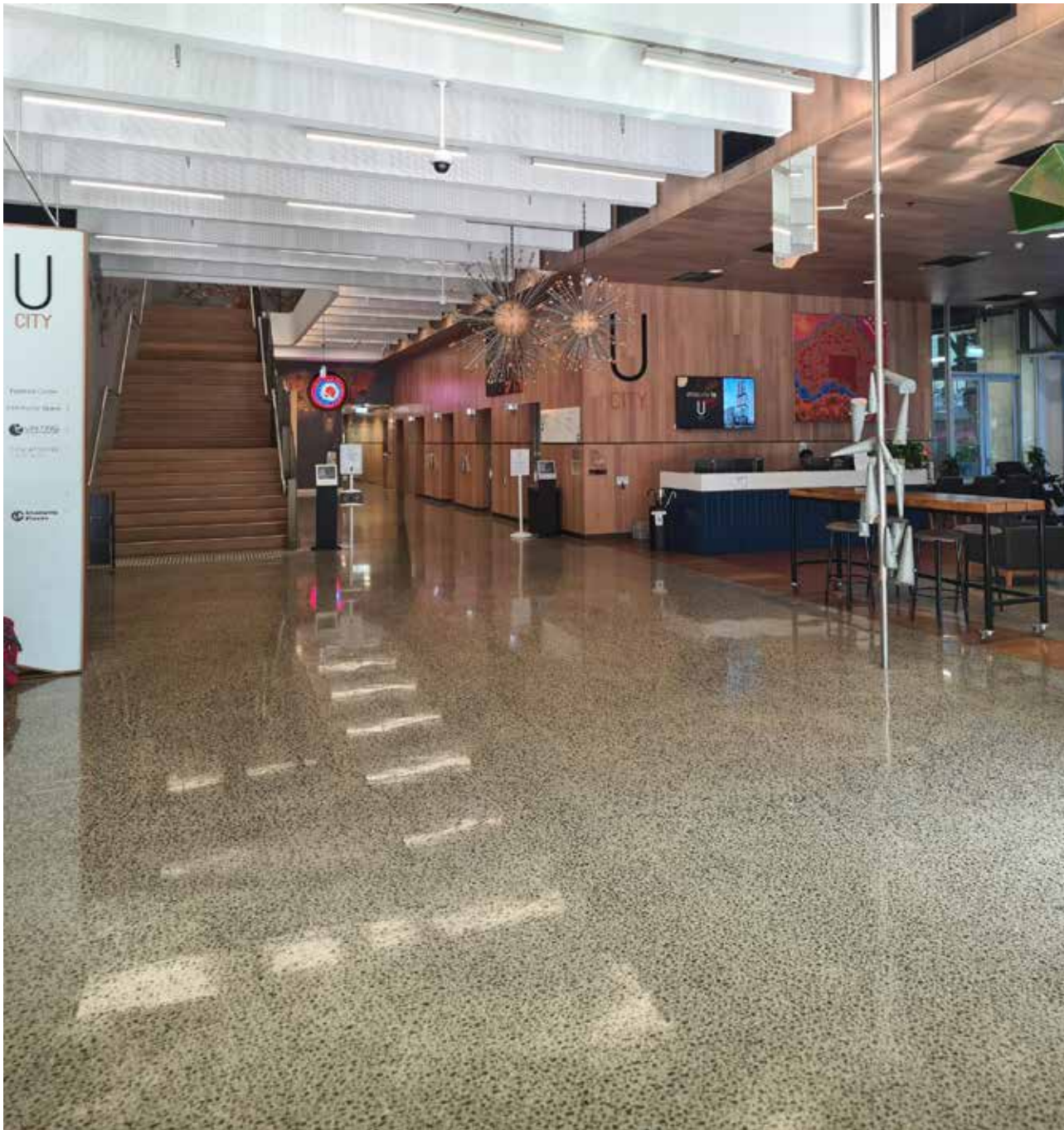
Follow the **Market to Riverbank link** between the Central train station and U City.



There is an Auto Park
car park across the road.
The address is
42 Franklin Street.



There is Care Park car park on Pitt Street. The address is 15 Pitt Street.

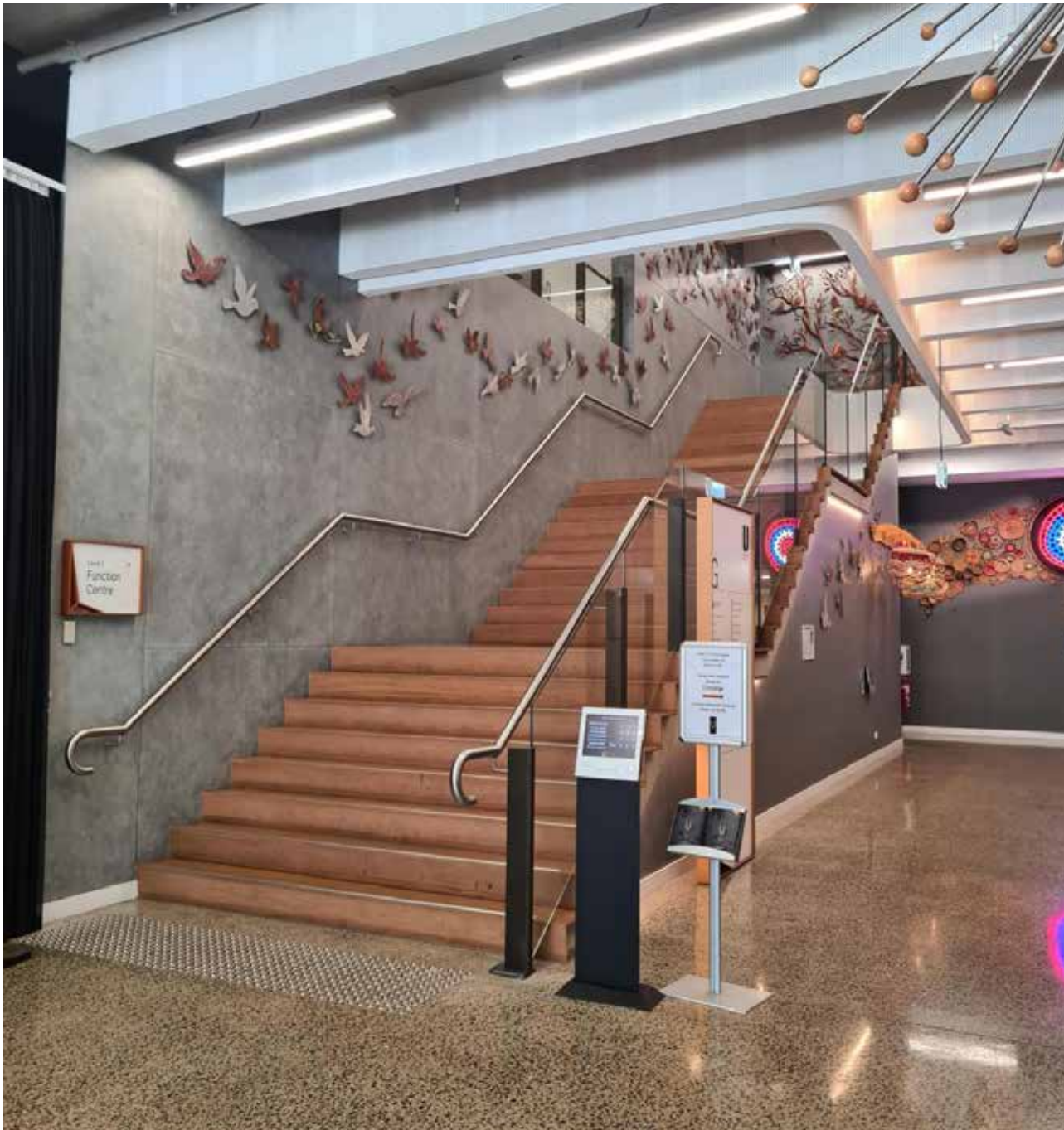


When you walk into the building this is what you see.

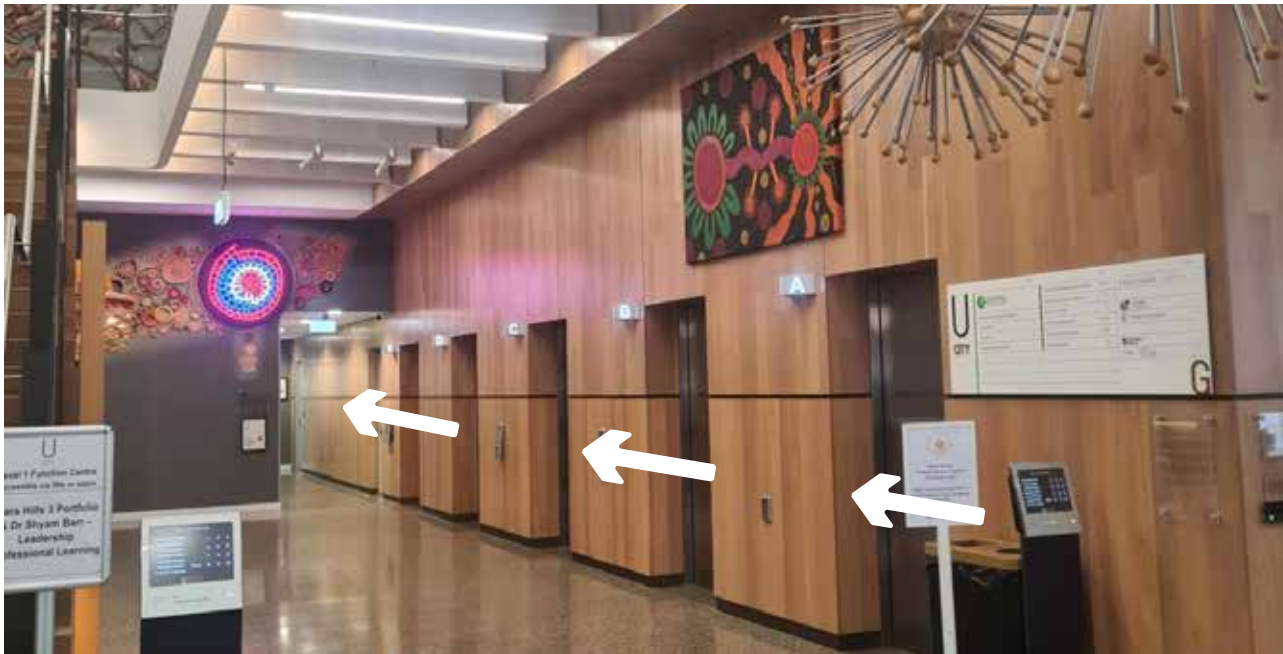
U CITY



A café called Luigi's
on your left.



Stairs in front of
you.



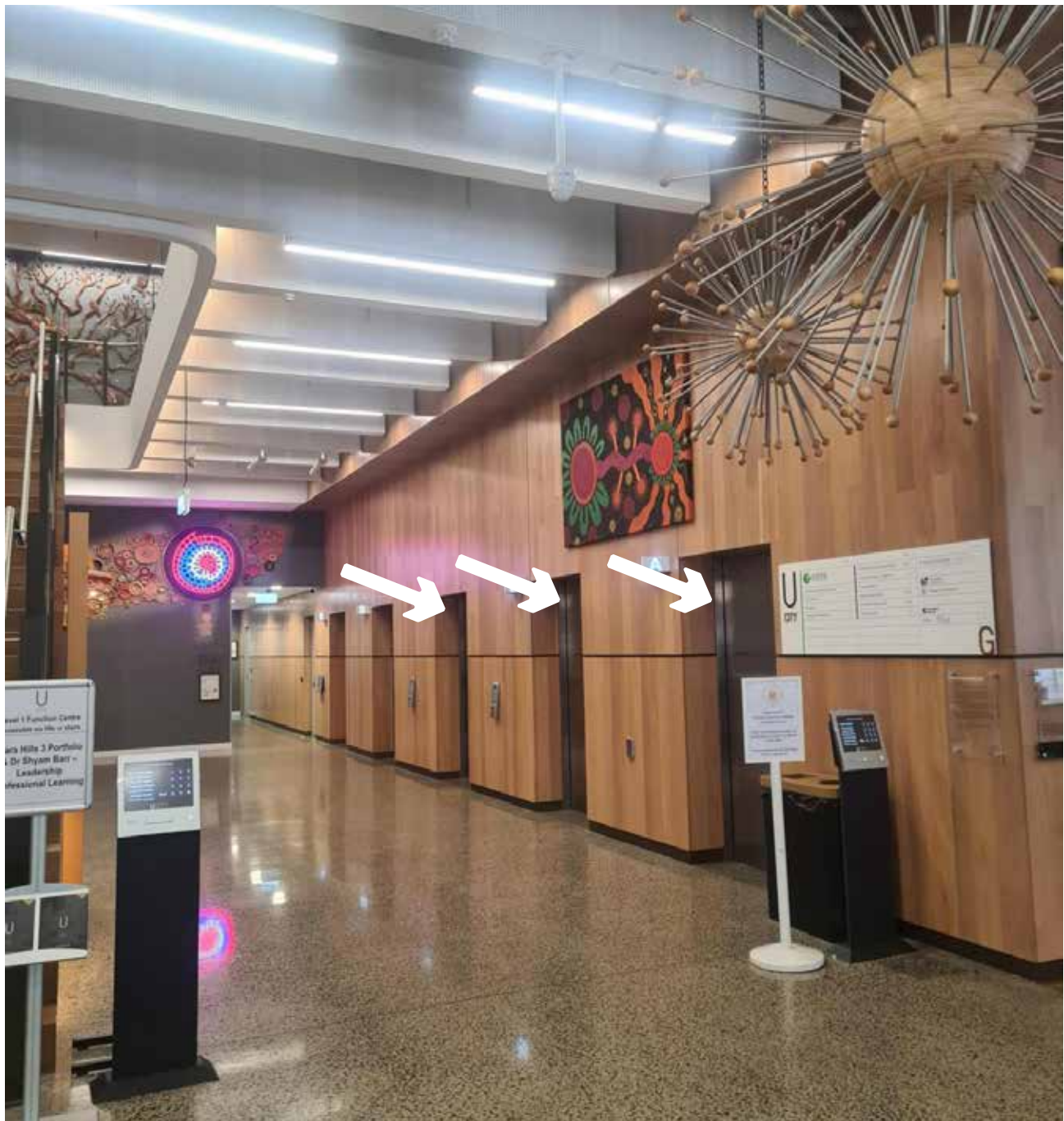
Toilets down this corridor.





A Changing Places bathroom on Level 1.

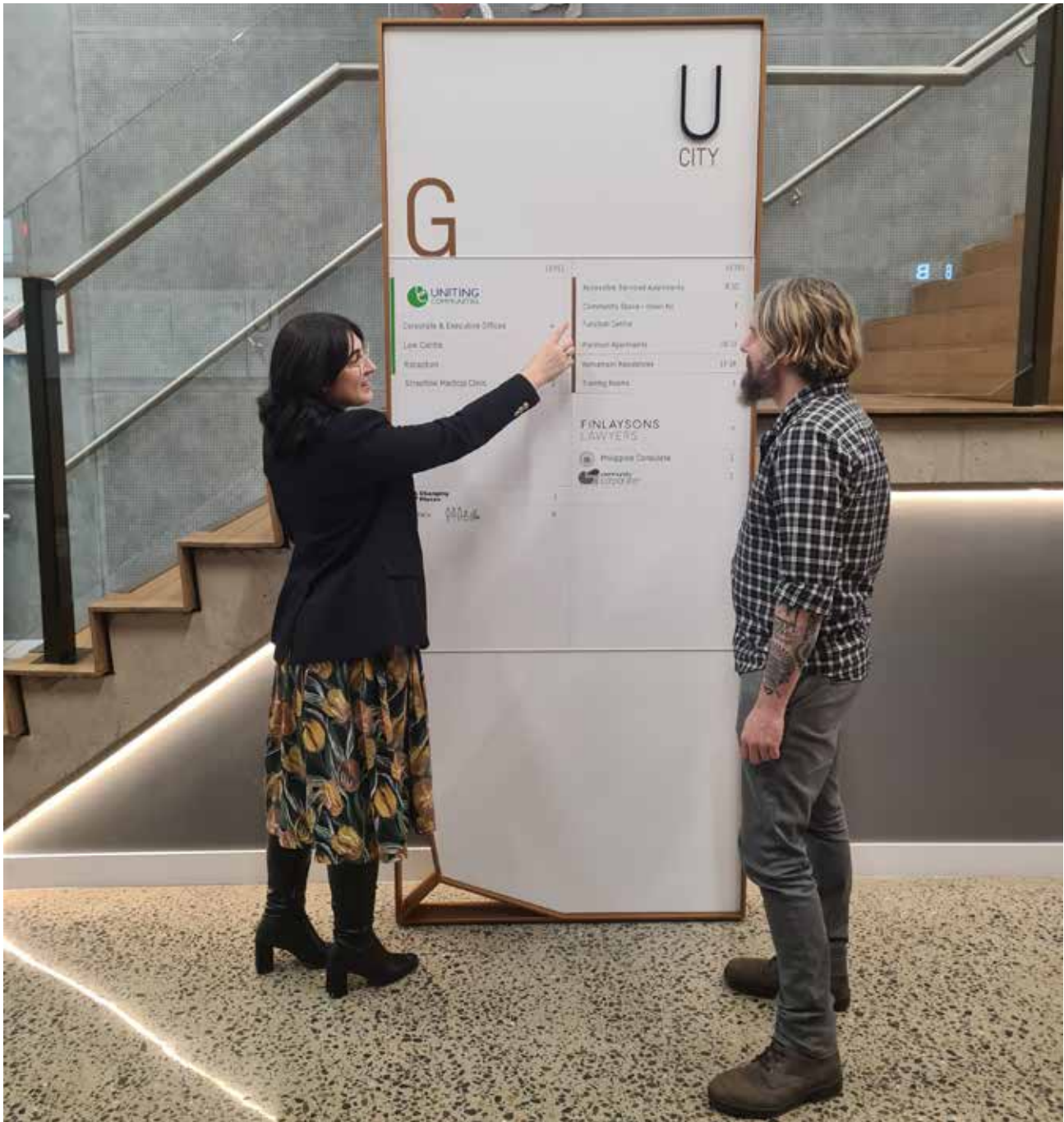




Lifts next to the stairs.



You can ask for help to use the lifts.



A directory next to the stairs and the lifts



Another directory next to the lifts.



A counter where you can ask for help.

Our staff know how to talk with people with all kinds of disabilities.



They understand that people communicate in different ways.

I am here for



information



appointment



meeting / function



I am with / at

(add person or service here)



on level



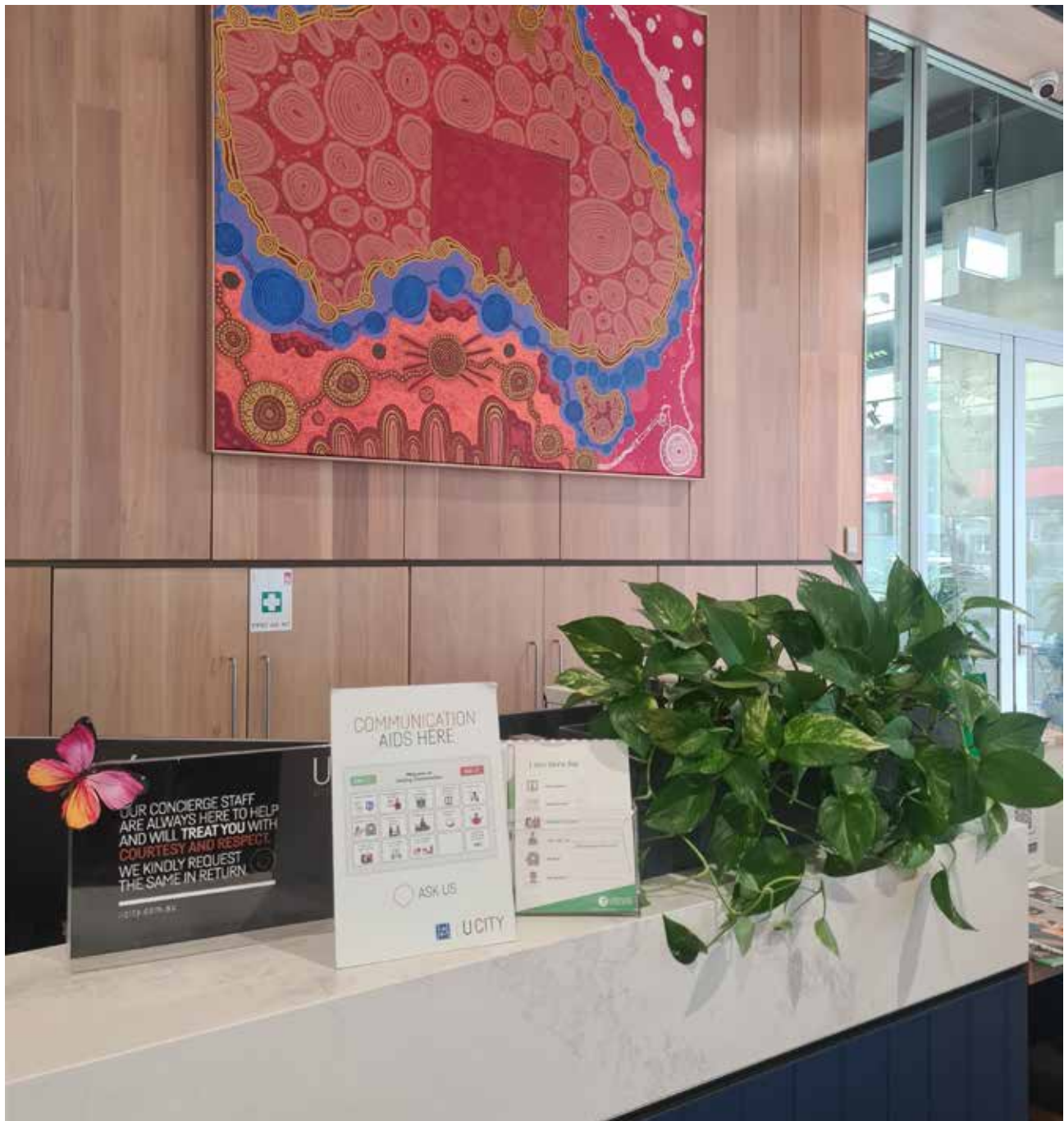
my name is



You can find this information card on our website. Here is the link to the card: [card](#)



You can fill in the card before you come to U City.
Or, the staff at U City have the cards and they can help you.

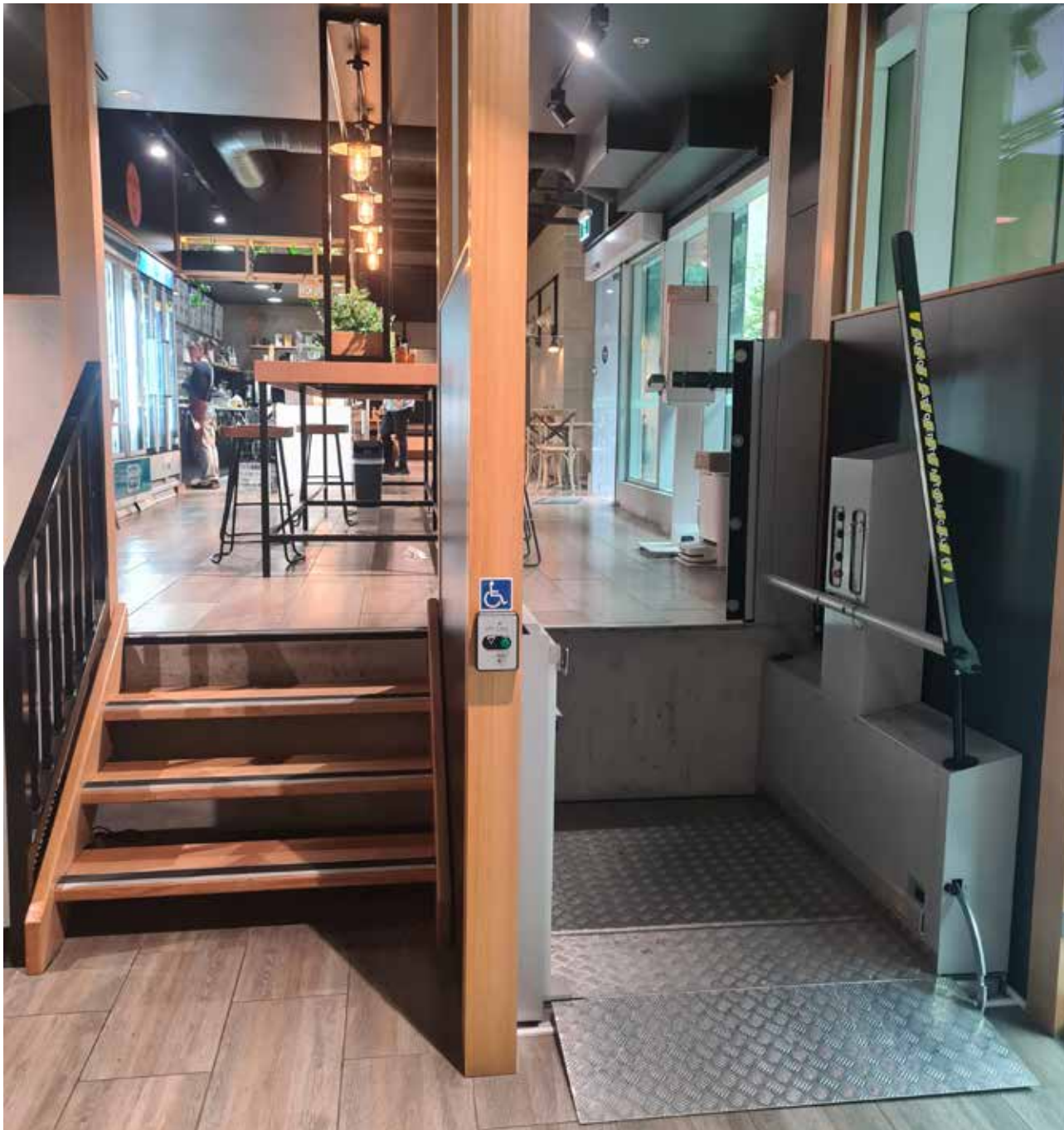


There are communication aids at this counter.



The Pitt Street Café is next door to U City. The café is quiet and accessible.





An accessible lift takes you upstairs in the café.



See you at
U City soon.